

# The Architecture of Managing Economical Sustainability

Prof. Dr. Joachim Kuhn  
Daimler AG  
Mercedes-Benz Sindelfingen plant  
Anglia Ruskin University  
Cambridge/Chelmsford

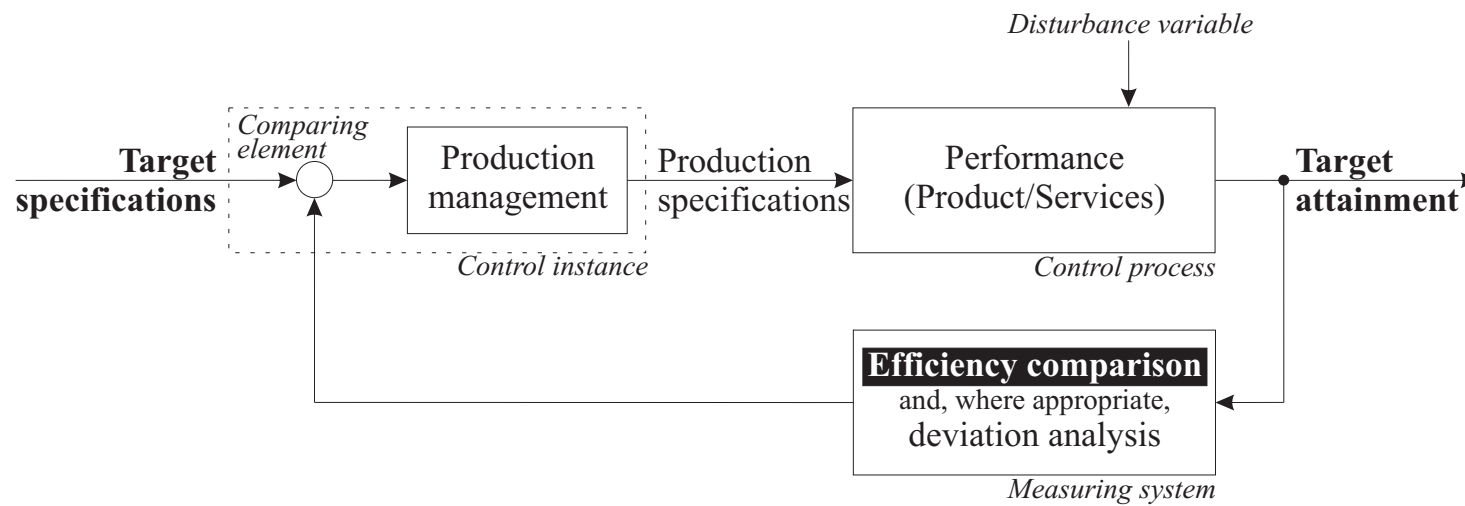
Vienna, 20<sup>th</sup> November 2009

1<sup>st</sup> Peter Drucker Conference  
Vienna 20<sup>th</sup> November 2009

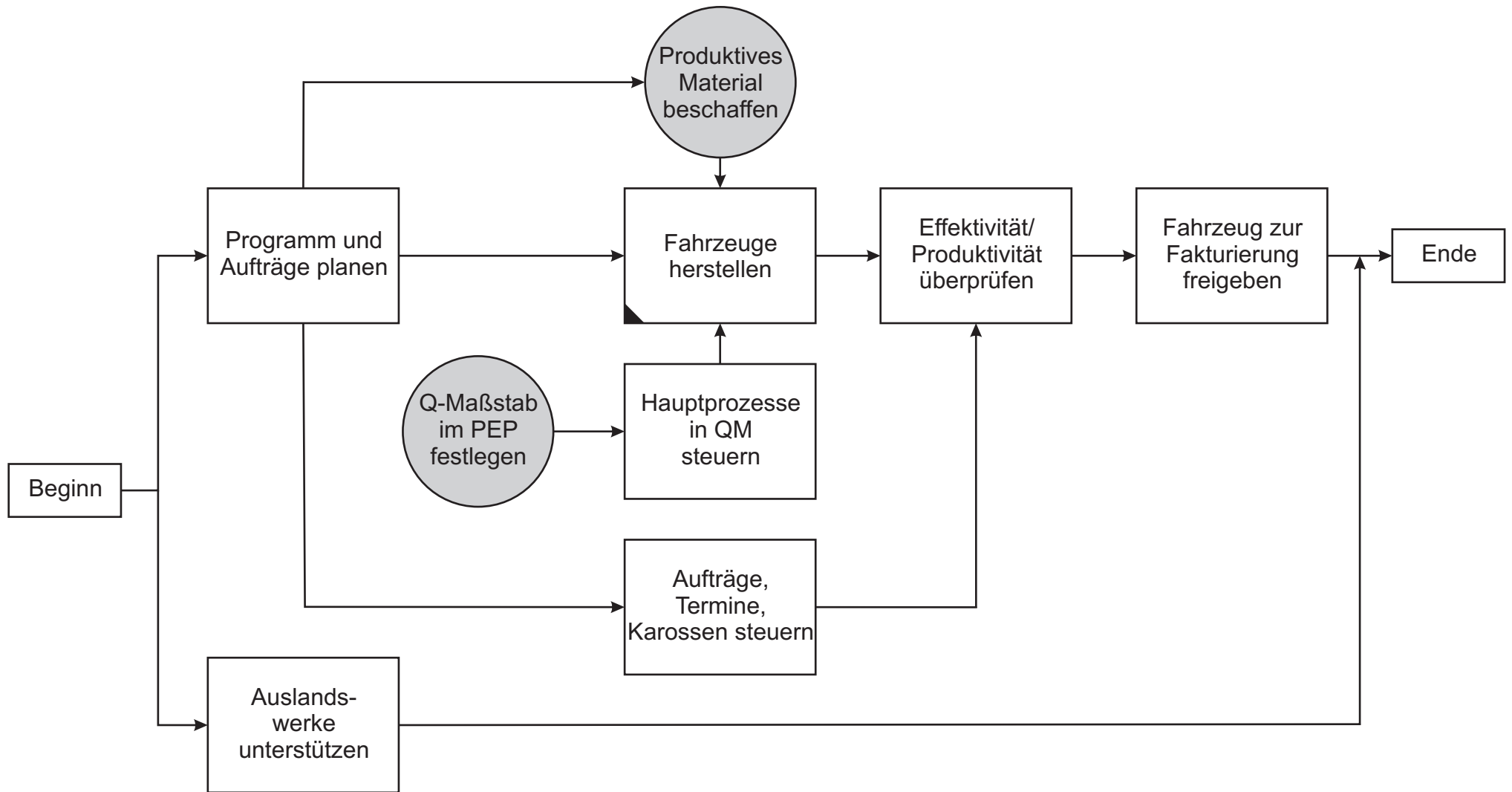
*Architecture for Economical Sustainability*

Prof. Dr. Joachim Kuhn

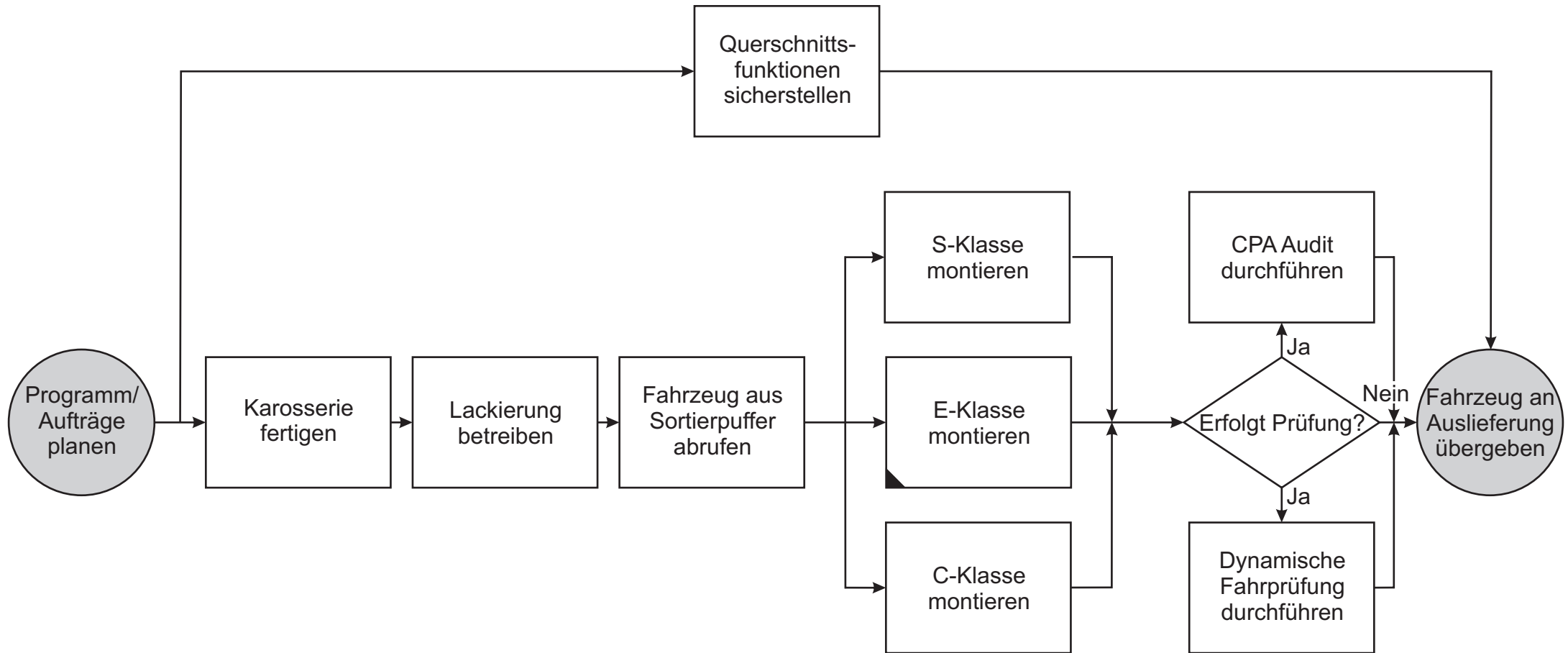
# THE CONTROL LOOP IN MANUFACTURING



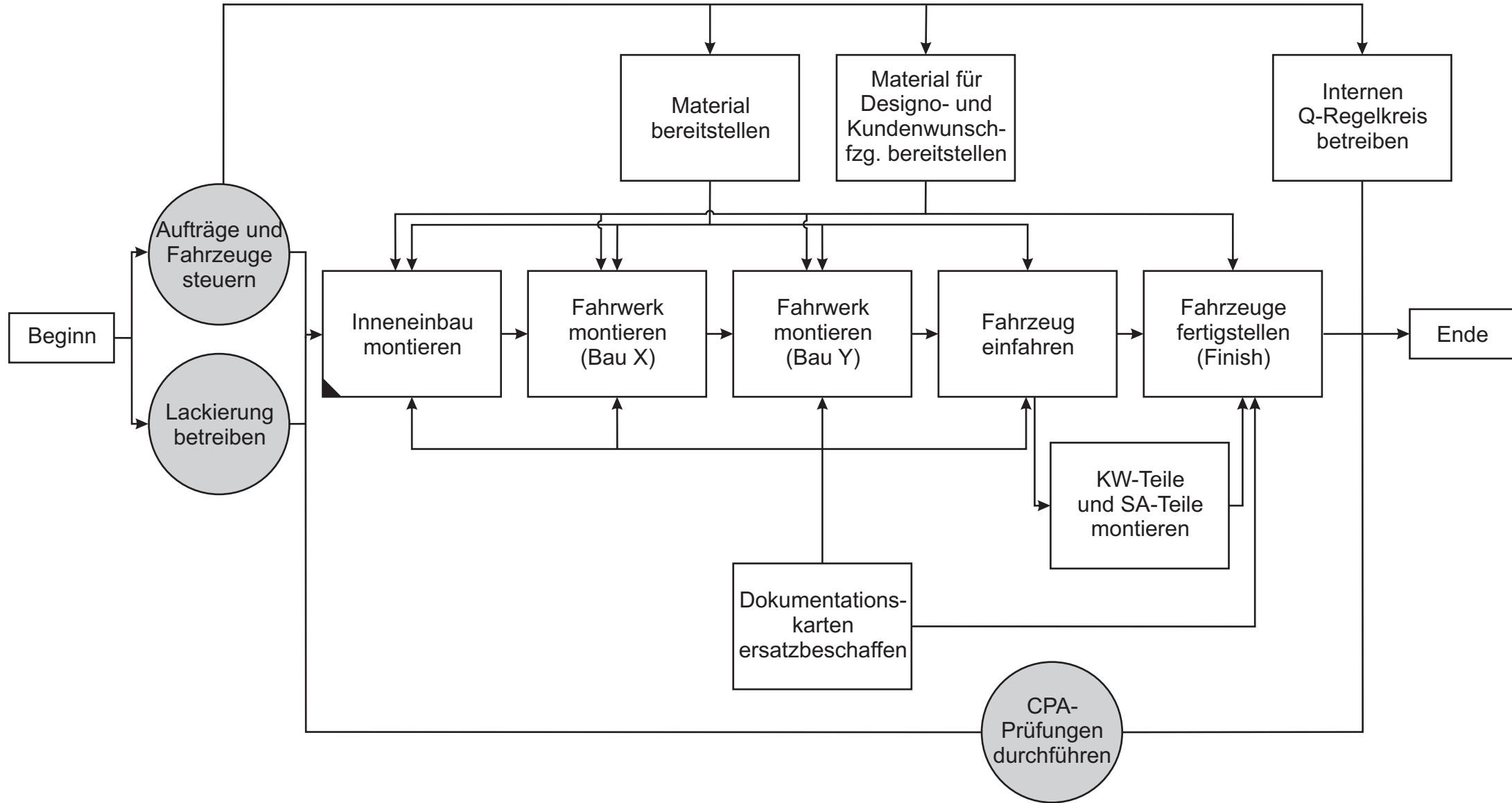
# THE CONTROL LOOP IN MANUFACTURING PRACTICE (I)



# THE CONTROL LOOP IN MANUFACTURING PRACTICE (II)

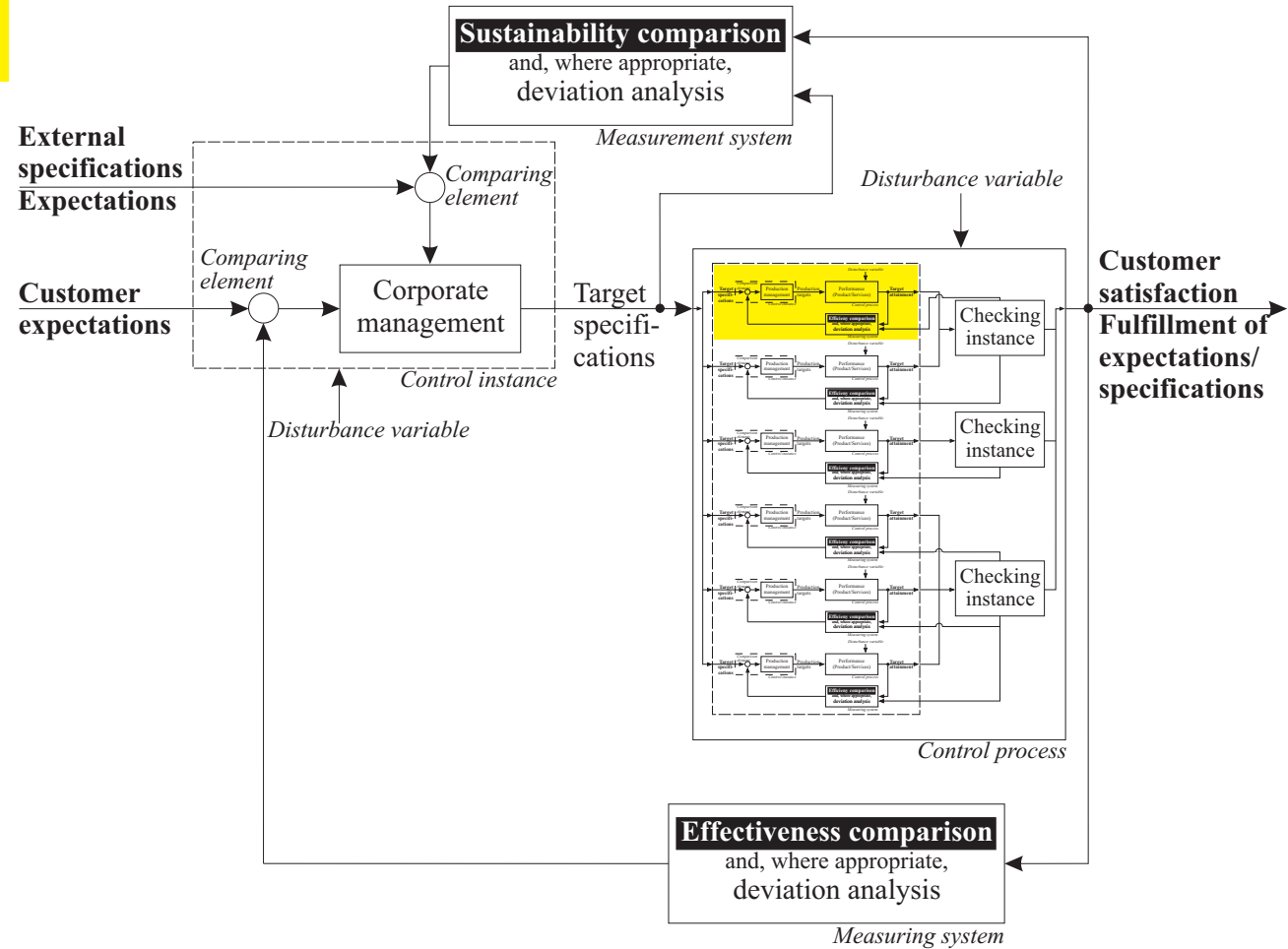
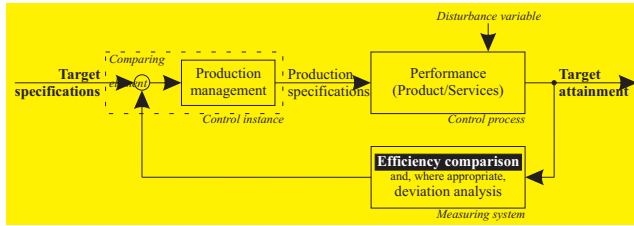


# THE CONTROL LOOP IN MANUFACTURING PRACTICE (III)

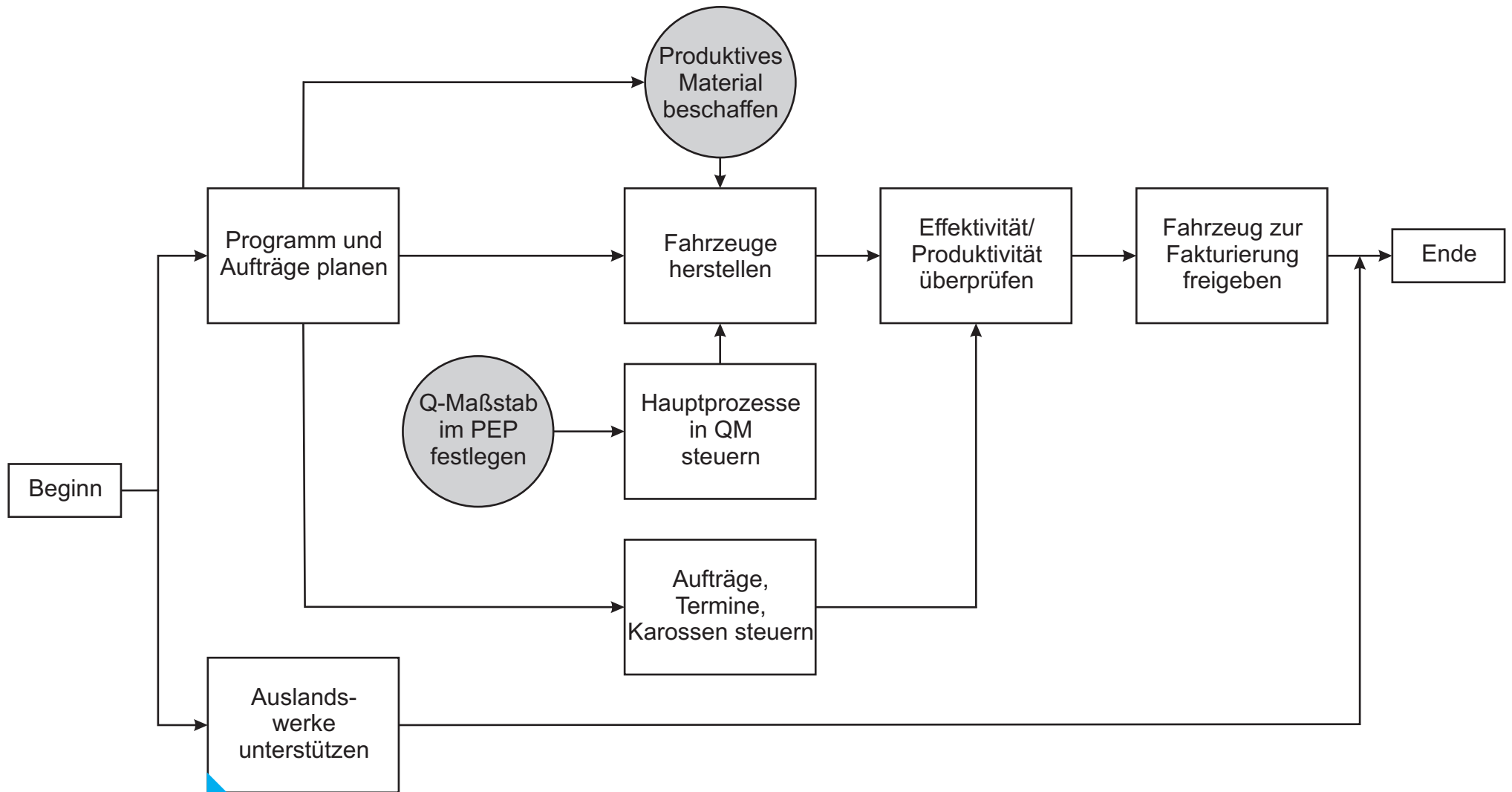




# THE SUSTAINABLE CONTROL LOOP IN MANAGEMENT

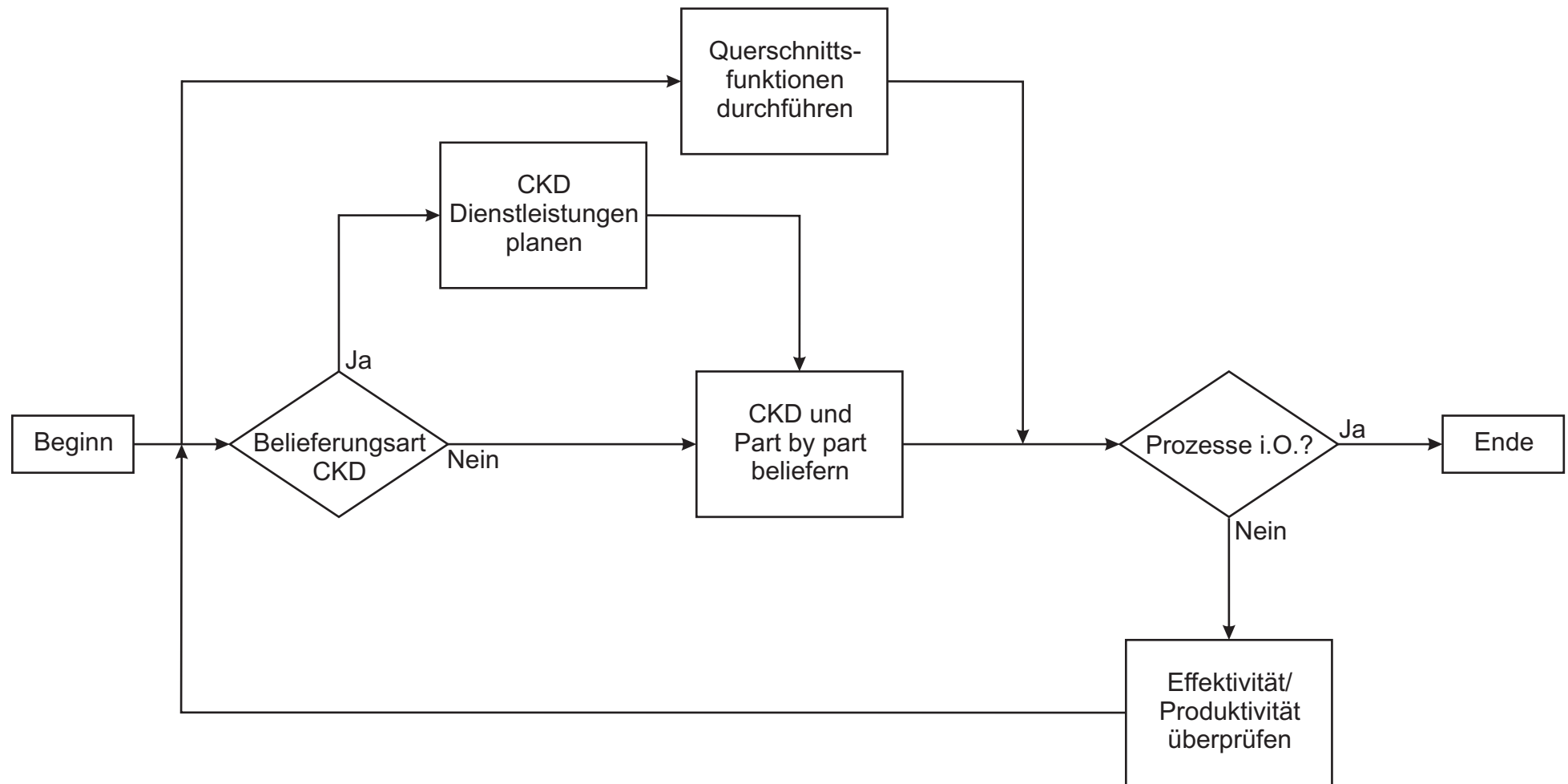


# THE SUSTAINABLE CONTROL LOOP IN MANAGEMENT PRACTICE (I)





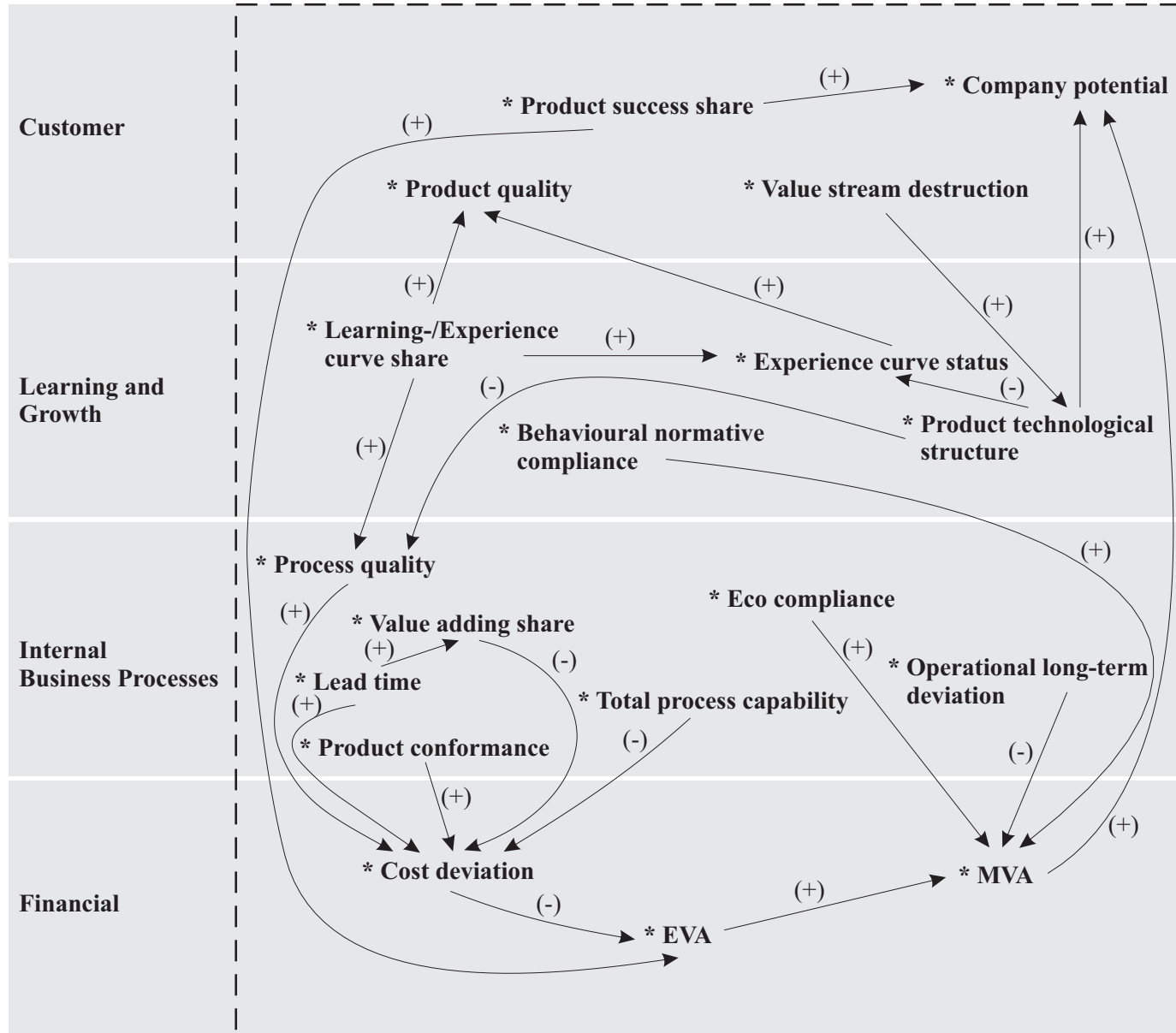
# THE SUSTAINABLE CONTROL LOOP IN MANAGEMENT PRACTICE (II)



# CONTENT OF THE CONTROL LOOP: MEASURES

	<b>Efficiency</b>	<b>Effectiveness</b>	<b>Ethics</b>	<b>Existence</b>
<b>Time</b>	<ul style="list-style-type: none"> <li>* Learning-/Experience curve share</li> <li>* Lead time</li> <li>* Value adding share</li> </ul>	<ul style="list-style-type: none"> <li>* Product technological structure</li> <li>* Product success share</li> </ul>		<ul style="list-style-type: none"> <li>* Value stream destruction</li> </ul>
<b>Quality</b>	<ul style="list-style-type: none"> <li>* Process quality</li> <li>* Product quality</li> </ul>	<ul style="list-style-type: none"> <li>* Total process capability</li> </ul>	<ul style="list-style-type: none"> <li>* Eco compliance</li> <li>* Behavioural normative compliance</li> <li>* Product conformance</li> </ul>	<ul style="list-style-type: none"> <li>* Operational long-term deviation</li> </ul>
<b>Cost/ Earnings</b>	<ul style="list-style-type: none"> <li>* Cost deviation</li> <li>* Experience curve status</li> </ul>	<ul style="list-style-type: none"> <li>* EVA</li> </ul>		<ul style="list-style-type: none"> <li>* MVA</li> <li>* Company potential</li> </ul>

# LINKING THE MEASURES



Notes: (-) = negative influence  
(+) = positive influence